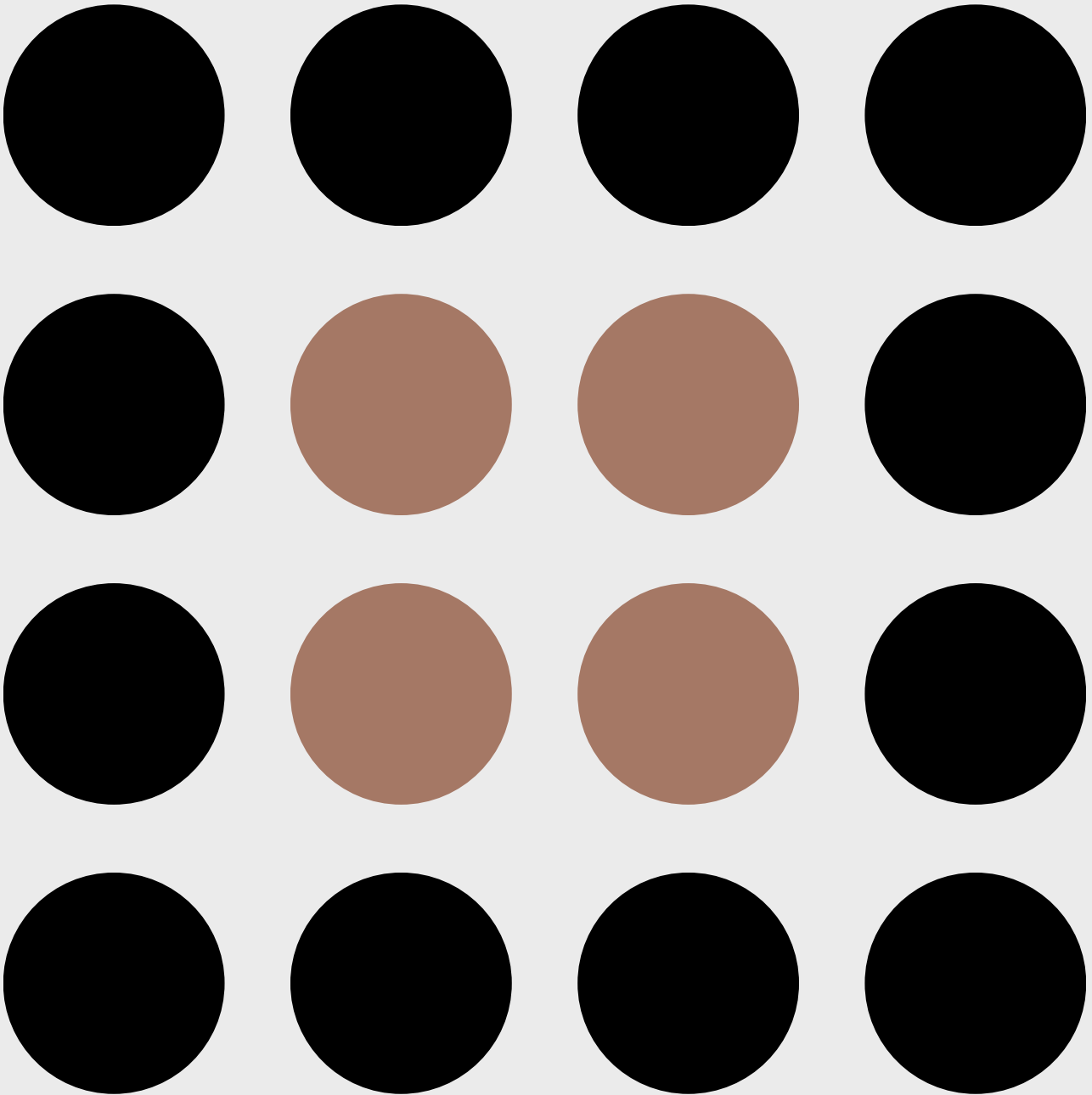


# bejot:magazine

winter edition 4/2024



bejot:

**In the winter '24 edition we take a look at the Orgatec, where we presented new products. We also show an interesting office project from the Netherlands and discuss trends in office design and colors for the coming year.**

# 04:

## **From comfort to efficiency**

Creating workspaces for  
people – Orgatec 2024.

# 12:

## **Leferink & KP Interieur project**

An office that favors  
growth and collaboration.

# 18:

## **Trends in office design for 2025**

The impact of employee  
comfort on office design.

# 32:

## **Trend: earth tones**

Colors of harmony  
and efficiency.

# From comfort to efficiency: creating workspaces for people

The Orgatec trade fair, one of the most important events in the furniture and interior design industry, attracted experts and leaders from all over the world. Visitors to our stand had the opportunity to see the latest products that combine functionality with aesthetics, as well as the environmentally friendly materials that underline the company's commitment to sustainable development.



## New products

Due to the growing interest in the mental and physical health of employees, we focused on products that support well:being at work. New collections emphasize comfort and functionality while supporting productivity and creativity.

The offer includes new acoustic solutions such as the Diva and Uniti collections designed by the Spanish studio Alegre Design and utilizing recycled materials. The Haali acoustic wall system by Wojciech Wołczyk creates spaces conducive to concentration and creative discussions, while taking inspiration from a natural nest.



The Bejot stand also featured Flathouse acoustic booths. They are an extension of the Treehouse model that, thanks to its flat roof, fits well into low-ceiling office spaces.

In the area of ergonomics, we presented tried-and-true collections of swivel chairs, as well as a relaxation zone that is key to well-being - a factor increasingly being taken into account in office design.

3



4



5



6



The highly rated Jelly modular seating system and the Clip seating collection designed by Ewa Póltorak and inspired by the shape of a paper clip both enjoyed great interest.

**Products on photos:**

1. New Clip collection designed by Ewa Póltorak.
2. Vieni\_soft collection.
3. Diva – acoustic pylon.
4. Diva – wall panels, stools Flos i Ox:co, table Spin.
5. Haali collection – walls and chairs.
6. Belt swivel chairs.
7. Flathouse acoustic booth.



**Products on photos:**

- 8. Clip chairs.
- 9. Clip armchair.
- 10. Jelly collection.

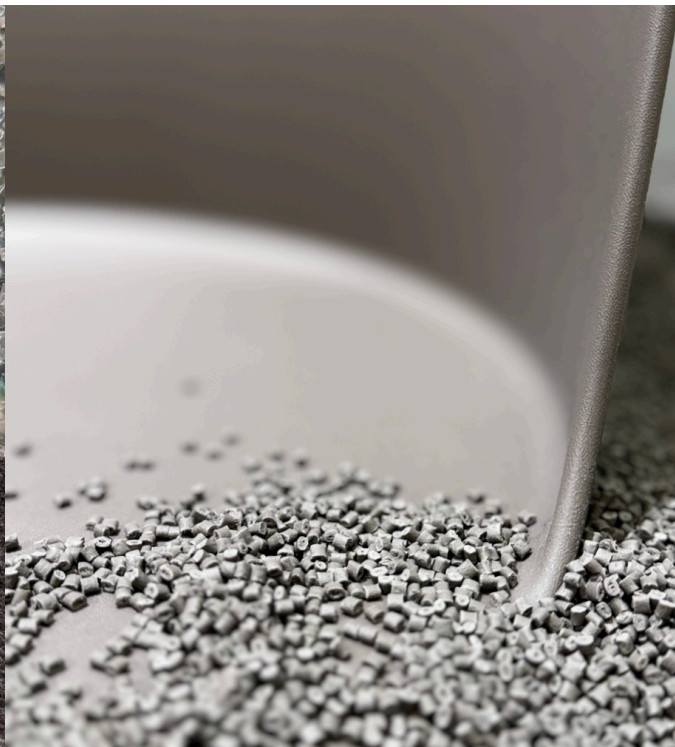




**Reduce, reuse, recycle – sustainable development in practice**

Visitors to the Bejot stand could learn about the story of furniture: from the beginning to the end of its life cycle. Information pylons presented the process of manufacturing recycled raw materials such as

post-consumer cotton, felt made out of plastic bottles and post-industrial polypropylene. With these materials, the company proves that post-production waste can be reused.



## New work environments – a space created by people for people

The Orgatec trade fair was an excellent opportunity to present our approach to office furniture design that is based on a harmonious combination of durability, comfort and concern for the well:being of employees. We aimed to emphasize that our projects are created with people – including their needs and health – in mind. We believe that providing employees with comfortable working conditions not only has a positive impact on their well-being, but also directly translates into increased efficiency and job satisfaction.

### Products on photos:

11. Barbara armchair.
12. Linje modular sofas.
13. Haali chair.





# An office that favors growth and collaboration – Leferink & KP Interieur project

Designing office spaces that meet the demands of a contemporary work environment requires listening to the client's voice. This enables the creation of a place conducive to both concentration and collaboration. This is the goal that the Leferink & KP Interieur team set for themselves when working on a project for a client from eastern Netherlands.



The process started with discussions with the client in order to understand their vision and needs. The result of this collaboration is an office designed in the spirit of a contemporary work model. The space combines quiet zones conducive to focused work with open areas dedicated to creative meetings and collaboration.

A key aspect of the project was creating an environment that supports hybrid work. The place not only encourages collaboration but also takes care of the well-being of its users. Vibrant colours, natural materials and ergonomic furniture make the office fresh, comfortable and full of energy.









**Products on photos:**

- 14. Quadra sofa
- 15. Legvan sofa.
- 16. Flos armchairs.
- 17. Legvan sofa.
- 18. Flos chairs.
- 19. Treehouse booths.
- 20. Flos chairs.
- 21. Quadra sofa and Cube poufs.





20

The collaboration between the project team and the client resulted in the creation of a space where people feel good and ideas develop naturally.

It is a place where organizations can achieve their goals, and we are proud to have been a part of that success.

**This is further proof that a well-designed office is not only about functionality but also inspiration and support for the people who use it.**



21

# Trends in office design for 2025

The changing needs of employees and companies have a significant impact on shaping trends in office design. In 2025 and in subsequent years, developments will focus on ensuring employee comfort, greater space flexibility and implementing solutions that support sustainable development.

## Flexible spaces that support creativity and collaboration

The growing popularity of remote and hybrid work has necessitated the design of spaces that can be easily adapted to a variety of work styles. Offices will become more flexible, allowing for easy arrangement of space as required.

Multifunctional spaces will play an important role, as they can serve different functions depending on the day and needs: they can be either quiet zones or teamwork zones. Office space design will therefore focus on balancing the need for collaboration with the need for privacy.





23

The following will have a key role:

- **Co-working spaces**  
dedicated to teamwork, supporting communication and collaboration.
- **Quiet zones**  
that provide conditions for concentration and individual quiet work.
- **Creative spaces**  
designed for brainstorming and developing creative thinking.

Such an approach will allow offices to become more functional, tailored to the diverse needs of employees and contemporary work models.



24









## Employee well:being and health

An even greater focus will be placed on the health and well-being of employees. This is why it is so important to create diverse spaces. Such an approach not only improves the quality of work but also enhances engagement and efficiency. Employee well:being will be influenced by:

- **Ergonomic furniture**

designed to support proper body posture. These include both well-fitted swivel armchairs intended for traditional workstations and ergonomic sit-and-stand stations that enable work in various positions.

- **Strefy relaksu i regeneracji**

created for short breaks during the day that support recovery and stress reduction.

- **Biophilia**

or elements of nature, which include not only vegetation but also the use of natural materials, organic structures and friendly, subdued colours.







These types of solutions support both the physical health and emotional well:being of employees, creating an environment more conducive to work.

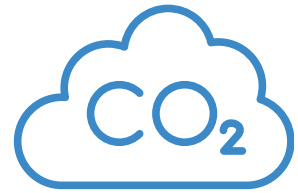
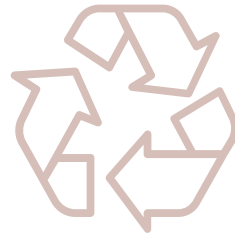
[Click for more about well:being.](#)



## Sustainable development and ecology

Sustainable development will become one of the most important aspects of office space design. Offices will be designed with the aim of minimizing negative environmental impact while simultaneously enhancing user comfort. The following will be of key importance:

- **Natural materials** such as wood, stone or plants, which are durable, aesthetic, and environmentally friendly.
- **Furniture** made from recycled materials, characterized by a low carbon footprint and the ability to be recycled at the end of their lifecycle.
- **Biophilic design** – the integration of nature into office spaces through the introduction of plants, access to natural light, organic textures and nature-inspired motifs.



= 74



One Vieni VE 203 upholstered in Oceanic fabric is equivalent to 74 plastic bottles.





OEKO-TEX®  
CONFIDENCE IN TEXTILES  
STANDARD 100



CURA consists of **98%**  
post-consumer recycled polyester  
made from used plastic bottles  
that could otherwise have ended  
up in landfills or in nature.





31







34

**Products on photos:**

- 22. Multifunctional space arranged with Bejot furniture.
- 23. Coworking space using Bejot furniture.
- 24. Treehouse THS 1T G2
- 25. Saar:step / Flos chairs. Creative zones.
- 26. Vieni chairs. Quiet zone.
- 27. Spin stool, Orte table, Selva wall. Creative zone.

- 28. Belt swivel chair.
- 29. Flos FS KP 215.
- 30. Epocc\_lounge and Saar.
- 31. Flos FSW K 721.
- 32. Woodbe chairs.
- 33. Epocc chairs EP215.
- 34. Ox:co\_small stools OX S H.

# Trend: earth tones

Earth tones have always been an inspiring element in design, evoking a sense of natural harmony and warmth. Shades of brown, beige, green and ochre are commonly used in interior design, creating cozy and comfortable spaces.

## How do earth tones support creativity and well:being?

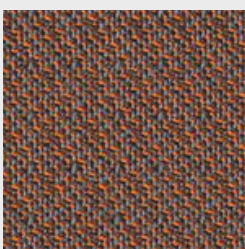
The contemporary approach to work-life balance emphasizes forming an environment that is conducive to creativity and well-being. That is why designing offices using natural materials and earth tones is becoming increasingly popular. They have a positive impact on mood, improving work efficiency and helping to create a friendly environment.

Earth tones in an office can also highlight the company's environmentally friendly approach, promoting sustainable and natural materials. These types of solutions enable the creation of an atmosphere of closeness to nature, which is particularly important today, when many people seek a balance between modernity and nature. Designing an office using these elements is not only an aesthetic trend but also a practical approach to creating a workspace.

## Pantone's 2025 Color of the Year is an earth tone

For years, the Pantone Color Institute has been studying how colours affect emotions, behaviours and perception of the world by tracking shifts in culture, fashion, art and design. On that basis, it forecasts colour trends, each year announcing the colour that will prevail in the forthcoming period.

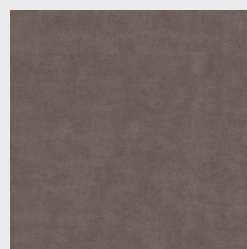
The Color of the Year reflects public sentiment and serves as an inspiration for designers, interior architects and artists around the world. In 2025, the company chose PANTONE 17-1230, known as Mocha Mousse – a warm, soft shade of brown inspired by comfort and the idea of "small pleasures".



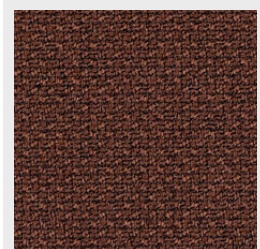
Ally AL063



Blazer CUZ86



Charles CH004



Cura CR158







**PANTONE®**  
17-1230 TCX  
Mocha Mousse

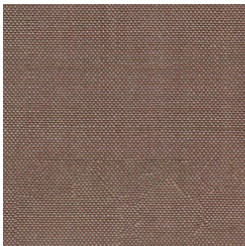


This choice refers to the growing popularity of simple yet luxurious moments, such as savouring a dessert or spending time in a cosy environment.

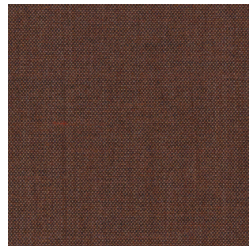
The shade with pink undertones evokes a feeling of warmth and calm, making it versatile in both interior design and fashion.



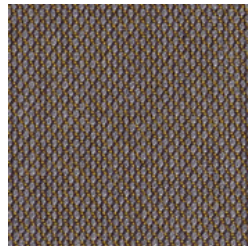
35. Fora\_care sofa.



Remix RX326



Remix RX346



Steelcut Trio 3  
SC376



Sawana SN061



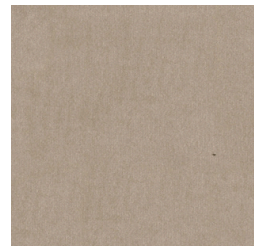
Oceanic OOC09



Oceanic OOC014



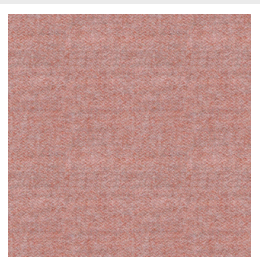
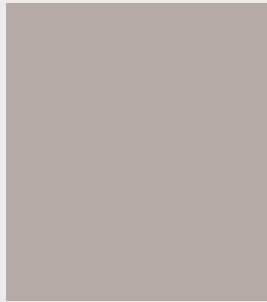
Keimo KA710



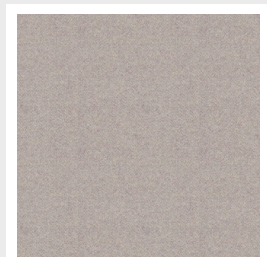
Chalres CH009

Mocha Mousse pairs perfectly with a variety of palettes – from bold combinations like mustard yellow or curaçao blue to more subtle contrasts with pastels such as rose tan or cornflower blue.

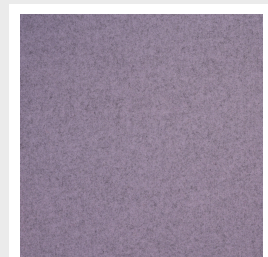
Its earthy quality also supports themes related to nature and sustainability, aligning with current trends that strive for harmony and well:being.



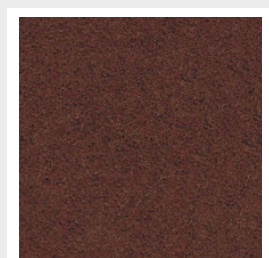
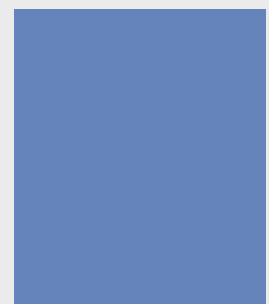
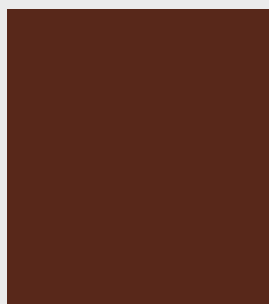
Synergy LDS74



Synergy LDS20



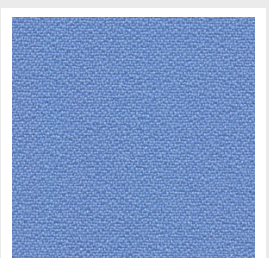
Blazer CUZ4M



Synergy LDS78



Blazer CUZ4K



Bond BD606

# **bejot:**

**the next edition is coming this spring**

**[www.bejot.eu](http://www.bejot.eu)**

Bejot sp. z o.o., ul. Wybickiego 2A, Manieczki, 63-112 Brodnica k. Poznania  
tel.: +48 61 641 59 00, e-mail: [export@bejot.eu](mailto:export@bejot.eu)