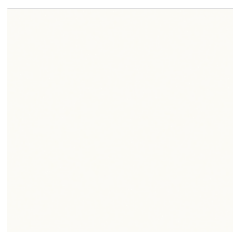
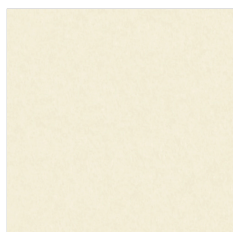


\* standardowa oferta Bejot  
Bejots Standardangebot  
Standard Bejot offer

edition: 02.2021  
price group: 2



IVORY | CH007



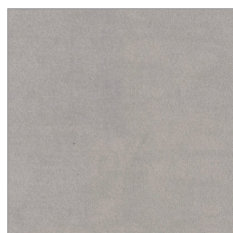
CREAM | CH008



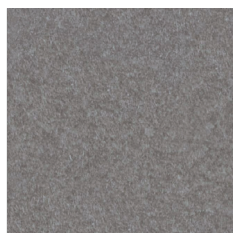
SAND | CH006\*



MUSHROOM | CH009\*



PELICAN | CH005\*



CASTOR | CH003



TRUFFLE | CH004\*



TEAK | CH012



AKACIA | CH041\*



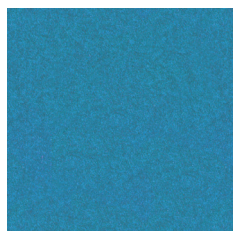
LEAF | CH043



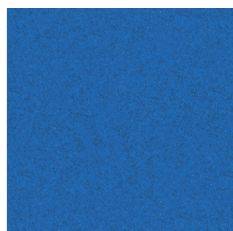
OLIVE | CH042



KHAKI | CH044\*



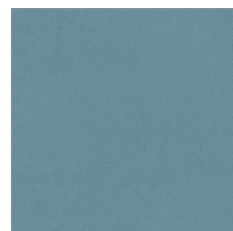
MALIBU | CH036



DENIM | CH035



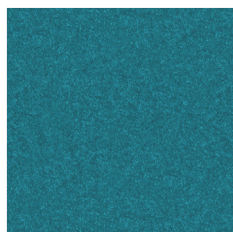
MIST | CH038\*



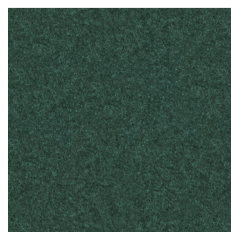
CADET | CH034\*



PETROL | CH039



CLOUD | CH037



GARDEN | CH045\*



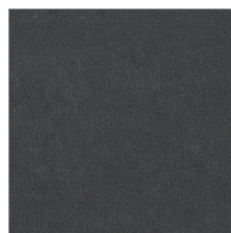
GREENNESS | CH040\*



COBALT | CH032\*



IMPERIAL | CH033\*



PEWTER | CH002\*



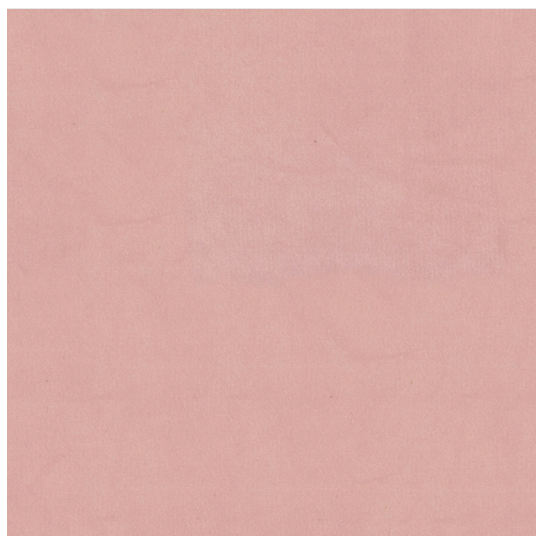
BLACK | CH001\*

Zdjęcia kolorów produktów na stronie,  
mogą odbiegać od rzeczywistych.

Colours of products presented on this  
website may differ from the actual colours.

Die Bildern der Farben der Produkte auf der  
Website können vom Original abweichen.

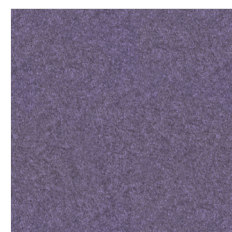




MELLOW | **CH030\***



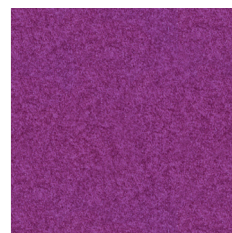
IRIS | CH029



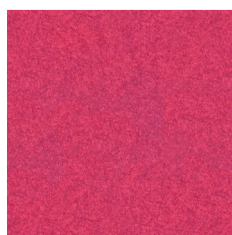
GRAPE | CH028



CONFETTI – CH020



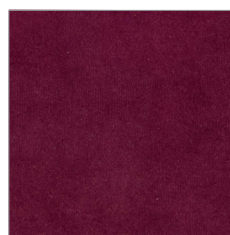
DAHLIA | CH027



MAGENTA | CH026



RASBERRY | **CH022\***



VINO | **CH024\***



BURGUNDY | CH025



RED | CH021



ORANGE | CH019



NOSTALGIA | CH031



WATERMELON | CH023



RUST | CH018



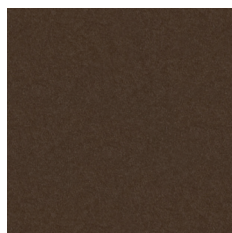
GINGER | CH017



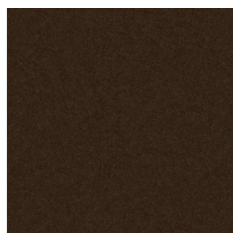
BRONZE | CH010



CARMEL | CH016



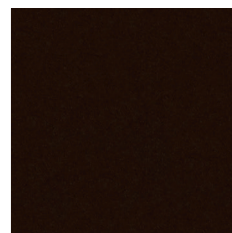
NUT | CH011



AUTUMN | CH015



CHESTNUT | CH013



CHOCOLATE | CH014



**apretura wodoodporna**  
wasserdichtes Finish  
water repellent

## pl:

**Skład**  
100% poliester

**Waga**  
433 g/m<sup>2</sup>

**Szerokość rolki**  
140 cm

**Odporność na ścieranie**  
90 000 cykli Martindale'a  
(BS EN ISO 12947-2:2000)

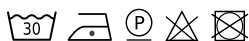
**Pilling**  
5 (EN ISO 12945-2:2000)

**Odporność na światło**  
5 (ISO 105-B02)

**Odporność koloru na tarcie**  
Mokre: 4-5 (UNI EN ISO 105-X12)  
Suche: 4-5 (UNI EN ISO 105-X12)

**Certyfikaty trudnopalności**  
• DIN EN 1021-1

### Czyszczenie



Tkanina Charles ze względu na strukturę (długi włos), podczas użytkowania może układać się w charakterystyczny dla tkanin welurowy sposób, tworzący wrażenie różnych odcieni tapicerki.

Dopuszcza się występowanie różnic odcieni pomiędzy poszczególnymi partiami produkcyjnymi.

## de:

**Zusammensetzung**  
100% Polyester

**Gewicht**  
433 g/m<sup>2</sup>

**Rollenbreite**  
140 cm

**Scheuerfestigkeit**  
90 000 Zyklen Martindale  
(BS EN ISO 12947-2:2000)

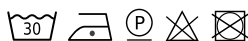
**Pilling**  
5 (EN ISO 12945-2:2000)

**Lichtechtheit**  
5 (ISO 105-B02)

**Reibechtheit**  
Nass: 4-5 (UNI EN ISO 105-X12)  
Trocken: 4-5 (UNI EN ISO 105-X12)

**Feuersicherung**  
• DIN EN 1021-1

### Reinigung



Der Stoff Charles kann aufgrund seiner Struktur (langes Haar) im Gebrauch veloursartig angeordnet werden, wodurch der Eindruck von verschiedenen Polstertönen entsteht.

Farbtonunterschiede zwischen einzelnen Produktionschargen sind zulässig.

## en:

**Composition**  
100% Polyester

**Weight**  
433 g/m<sup>2</sup>

**Roll width**  
140 cm

**Abrasion resistance**  
90 000 Martindale cycles  
(BS EN ISO 12947-2:2000)

**Pilling**  
5 (EN ISO 12945-2:2000)

**Light fastness**  
5 (ISO 105-B02)

**Fastness to rubbing**  
Wet: 4-5 (UNI EN ISO 105-X12)  
Dry: 4-5 (UNI EN ISO 105-X12)

**Flammability**  
• DIN EN 1021-1

### Cleaning



Charles fabric, due to its structure (long hair), can be arranged in a velour way while being used, creating the impression of different shades of upholstery.

Shade differences between individual production batches are allowed.